



# Piney Rail Riders Newsletter

May 2024

## 2024 OFFICERS

### President

Cinnamon (Marie)Vosburg  
cinnamonv1@gmail.com  
814-316-5804

### Vice President

Kenny Shaffer  
kennyshaffer5@gmail.com  
814-715-2551

### Secretary

Gerald Fetterman  
g\_fetterman@yahoo.com  
724-996-9551

### Treasurer

Ginny Kodrich  
gamckisson1@gmail.com  
814-229-4774

Piney Rail Riders  
PO Box 265  
Strattanville, PA 16258  
info@pineyrailriders.org  
pineyrailriders.org

## Club Membership

Currently, we have 497 members. If you still have not renewed your membership, you can do it on our website under the 2024 renewal tab with PayPal or you can download and print the application and mail it with payment.

New members can join under the membership tab with PayPal or you can download and print the application and mail it with payment.

Once payment has been received, we will mail out your membership packet with a calendar of events, trail map and buggy sticker.

Please spread the word and invite others interested in becoming a member or a sponsor to visit our website, [pineyrailriders.org](http://pineyrailriders.org) where they can find the necessary applications for both. Let's continue to work together and grow.

## CALENDAR OF EVENTS

- 5/4 Dale Marsh Memorial Ride
- 5/11 Maintenance Day
- 5/16 Meeting @ Clarion Eagles
- 5/18-19 Marienville Tour De Forest
- 6/8 Maintenance Day
- 6/15 Sligo Poker Run
- 6/20 Meeting @ Clarion Eagles
- 6/29 Maintenance Day

# CLUB NEWS!!

## WHAT IS NEXT FOR PINEY RAIL RIDERS?

Hello everyone! As some of you know, we're in fund raising mode, reaching towards the goal of purchasing the trail. Our Grant committee has been conducting meetings with our local commissioners in both counties, our state representatives and even Senator Casey. There is a lot of interest in both the trail and the club, but we have to be the ones to step up and secure the shortfall that's expected with a positive grant outcome. With that in mind and with the philosophy that you miss 100% of the shots you don't take, I'm asking or taking that shot...as I've said before, this has always been our goal. Without the capital we are stuck in a repeating cycle of asking for grant money for other projects and being told no because we don't own the trail. This is a big ask! But we are offering a lifetime membership with our highest donation (all donations are tax deductible) a five year membership with the next level. A 2 year membership with the last level. This is not a mandatory donation, it's also not a set amount, you can donate any amount too! This donation, in no way, changes your current membership and is not going to change future memberships. We are hoping this will be a one time thing. For our brand new members, we realize that you are just getting out there, getting started on the trail and the club. This goal has been in the works for 7 years now. We have great plans for what we want to offer, this is a necessary stepping stone. We hope that you see our potential and want to help us realize those plans.

The Land Acquisition Grant Application has been submitted and accepted! Now we wait for word on approval. Thank you to all our sponsors and members who have donated toward our acquisition goal.

Please find attached to this newsletter, a letter of intent for anyone wanting to donate. Print the letter and mail it with payment to Cinnamon Vosburg, 63 Vosburg Lane, Strattanville, PA 16258.



# **CLUB NEWS!!**

## **GUN RAFFLE FUNDRAISER**

Our Gun Raffle Fundraiser was drawn at the April 18<sup>th</sup> meeting at the Clarion Eagles. We would like to thank everyone who purchased and/or sold tickets for the raffle. Congratulations to the following winners.

**#1**

Wicked Ridge Rampage Package Crossbow  
Supply Box

**Jeff Ferringer, New Bethlehem**

**#2**

Savage Mark II F 22LR  
Ammo Can

**Andrea Simpson, Shippenville**

**#3**

Ruger EC9S 9mm  
Ammo Can

**John S, Oil City**

**#4**

Smith and Wesson MP15 Sport II 556 Semi Auto  
Ammo Can and AR Mag

**Melissa Kemmer, Clarion**

**#5**

Ruger American Ranch 450 Bushmaster  
Ammo Can

**Christine Walls, Rimersburg**

Thank you to our sponsors and their donations to make the Gun Raffle a success.

**Sportsmen Outfitters in Knox  
Vinyl Graphics Unlimited in Shippenville.**

# CLUB NEWS!!

## MEAT RAFFLE

Name _____		 <b>Piney Rail Riders</b> Friends & Family Day Meat Raffle	No. 000
Address _____			
Phone _____			
Seller _____			
No. 000		<b>WINNING PRIZES LISTED ON BACK</b> <b>\$10 DONATION/TICKET</b> 750 tickets sold! <b>WINNER will be DRAWN AUGUST 10th, 2024</b> At Our Friends and Family Day <i>All proceeds will go towards our acquisition grant fund</i> <small>All unsold tickets are the property of Piney Rail Riders. 800CC-8000000 1 ticket-1 chance to win. Need not be present to win. MUST be 18 to purchase.</small>	
<b>WINNING PRIZES</b> 1st. \$200.00 Gift Certificate M&S Meats 2nd. \$50.00 Gift Certificate M&S Meats 3rd. \$25.00 Gift Certificate M&S Meats All proceeds will go towards our acquisition grant fund.		<b>*MEATS Provided by*</b> <b>M&amp;S MEATS</b> 1353 Brookville St. Fairmount City, PA 16224	

Tickets will be available at the May 16<sup>th</sup> meeting held at the Clarion Eagles @7pm. Drawing will be held at our Friends and Family Day on August 10<sup>th</sup>. All proceeds will go to our Acquisition Grant Fund. **MUST BE 18 TO PURCHASE.** All unsold tickets become property of Piney Rail Riders. 1 ticket – 1 chance. Winner does not need to be present to win.

## VISITING THE TRAIL

For your convenience, there are two campgrounds nearby from our Limestone Trailhead.

### Piney Meadows Campground

9281 PA66

Fairmont City, PA 16224

814-715-3681

[pineymeadowscampground.com](http://pineymeadowscampground.com)

### Old Mill Park Campground

151 Old Mill Park

Summerville, PA 15864

814-227-8423



# CLUB NEWS!!

Only 3 days away. Come and enjoy a fun-filled day of riding, a chinese auction, 50/50 and good food to honor Dale.

## DALE MARSH 2<sup>ND</sup> ANNUAL ATV/UTV POKER RUN SATURDAY MAY 4, 2024

Dale loved to be outdoors no matter the weather but looked forward to the spring when it got nice enough to ride his 4-wheeler in local rides and Poker Runs. 3 years ago, Dale lost his life riding his 4-wheeler. On his way home from a ride, Dale swerved to miss a dog rolled his 4-wheeler, and later succumbed to his injuries. What better way to honor Dale and give back to a cause he loved, than doing what he loved to remember him? This year a portion of everything we bring in will be donated to PINEY MEADOWS CAMPGROUND/ And a TBD family/child in need of help with medical expenses.

### Poker Run Schedule

8:30 AM – 9:45 AM REGISTRATION: PINEY TRAILHEAD.

10:00 AM – Rider's return. 5 STOPS – (With ½ hr stops per location to draw cards, bathroom breaks).

GROUPS 1 & 2 WILL DEPART TRAILHEAD AT 10 AM; GROUPS 3 & 4 WILL DEPART TRAILHEAD AT 10:30 AM

GROUPS 1 & 3 WILL START AT PINEY TRAILHEAD, THE LOG ON THE TRAIL, WOODLANDS TAVER, BLUE TOWN TAVERN, SNUG HARBOUR, AND END AT THE PINEY MEADOWS CAMPGROUND.

GROUPS 2 & 4 WILL START AT PINEY TRAILHEAD, THEN DO THE ROUTE BACKWARDS STARTING WITH SNUG HARBOUR, BLUE TOWN TAVERN, WOODLANDS TAVERN, THE LOG ON THE TRAIL, AND ENDING AT THE PINEY MEADOWS CAMPGROUNDS FOR PRIZES, CHINESE AUCTION, 50/50, & FOOD TRUCK.

\*\*\*Food will be available for purchase AT BACK-ALLEY BBQ FOOD TRUCK at Piney Meadows Campground located @ 9281 Rt 66 Fairmount City, Pa 16224.

The price is \$20 for both Drivers AND Riders of the poker run. EVERYONE MUST SIGN A WAIVER TO PARTICIPATE IN RIDE.

If you do not have a 4-wheeler or Buggy or you aren't interested in going along on the poker run join us at the pavillion for Chinese Auction and 50/50 and BACK ALLEY BBQ. All vehicles pulling trailers must be parked at Limestone Trailhead or Piney Trailhead, as directed by Piney Meadows campground management. Any questions please Feel free to reach out to me at 814-648-1064 thanks, Jess.

\*\* CAMPSITES AVAILABLE FOR RENT AT PINEY MEADOWS CAMPGROUNDS located 9281 Rt 66 Fairmount City PA 16224. BY CONTACTING THEM DIRECTLY @ 814-715-3681.

Top 3 Hands & Worst hand Win  
50% of the Pot  
(40% – 30% – 20% – 10%)

The remaining 50% will be split and donated to the places listed above.

*In Memory of Dale Marsh.*

# CLUB NEWS!!

## ANNOUNCING 2024 MERCHANDISE

Get your merchandise this Saturday, May 4 at Piney Meadows Campground, Dale Marsh 2nd Annual Ride.

Available at our monthly meetings and/or online at [pineyrailriders.org](http://pineyrailriders.org).



## Available Items

- Hoodie
- Beanie
- Crew
- Long Sleeve Shirt
- Short Sleeve Shirt
  - Zip Hoodie

## 2024 SPONSORS

Blue Town Tavern  
Clarion County ABATE  
Clarion County Rod & Gun Club  
Drew's Septic Pumping  
East American Motorsports  
Extreme Metal Products  
i.e. Insurance  
M&S Meats  
Maria Marburger Hair Design – **20% off first service for new clients**  
Old Mill Park Campground  
Piney Meadows Campground  
Relevate Business Advisors LLC  
Rickard Trucking LLC  
Sarah's Snack Shack  
Sportsmen Outfitters  
Stiller Motorsports – **mention you are a member for discounts**  
Summerville Eats and Treats  
The Loomis Bar & Restaurant  
Unique Fabrication  
Unique Gas  
Vinyl Graphics Unlimited Inc.  
Woodlands Tavern

**Visit our webpage [pineyrailriders.org](http://pineyrailriders.org) to find out how you can become a sponsor today and have your business' events listed here each month for our members to enjoy.**



# SPONSOR EVENTS

Every Thursday

Blue Town Tavern  
**KARAOKE**  
Thursdays  
AT 7PM

Free Pool

BLUE TOWN TAVERN

**TACOS & TEQUILA**

Every Monday

OPEN AT NOON

5609 ROUTE 66, NEW BETHLEHEM

LOOMIS BAR

**MONDAY SPECIAL**

**WING NIGHT**

\$20

6 WHOLE JUMBO WINGS

ORDER AT  
(814) 226 - 8400  
OPEN EVERY MONDAY 4PM-11PM

LOOMIS BAR

TUESDAY SPECIAL

WHOLE PIZZAS  
FOR ONLY \$10

DINE-IN ONLY

4PM-11PM

LOOMIS BAR

**WEDNESDAY SPECIAL**

GRILLED OR FRIED  
BUFFALO CHICKEN WRAPS

**\$10**

ORDER AT

(814) 226 - 4800  
540 MAIN ST CLARION, PA 16214  
OPEN EVERY WEDNESDAY FROM 4PM - 11PM

LOOMIS BAR  
19 S ST 6TH AVE, CLARION PA 16214

**THURSDAY SPECIAL**

**\$15 LARGE BUFFALO CHICKEN  
RANCH PIZZA**

OPEN EVERY THURSDAY 4-2AM

ADD ANY TOPPINGS FOR \$2!  
(814) 226 - 8400

LOOMIS BAR

**FRIDAY SPECIAL**

**\$10 STEAK BURGER & FRIES**

DINE IN ONLY

ORDER AT  
(814) 226 - 8400

REGULAR OR GLUTEN FREE BUNS!

OPEN EVERY FRIDAY 4PM-2AM

LOOMIS BAR

**KARAOKE NIGHT**

APRIL 26TH

FRIDAY

\$10 STEAK  
BURGERS &  
FRIES

STARTS @9PM  
OPEN UNTIL 2AM

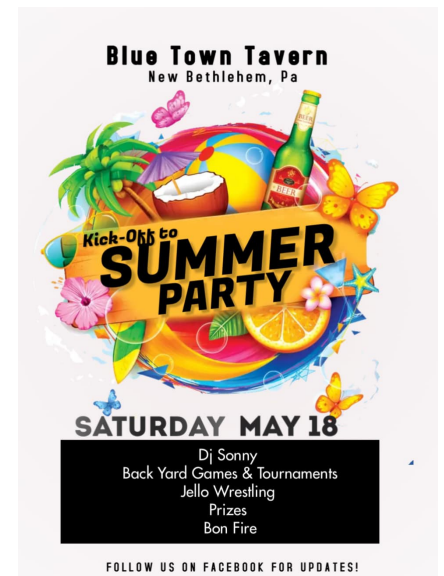


# SPONSOR EVENTS

**Piney Meadows Campground:** Call or text Tonya at 814-715-3681 or message on Facebook to book a pavilion for your birthday party, reunion, wedding etc.

They have 2 pavilions to choose from, both are about the same size. A contract must be signed. Price is \$100/day plus \$100 deposit that will be refunded once everything is cleaned. There are bathrooms located close to each pavilion and there is a fridge at each one. They are booking fast.

**Clarion County Rod & Gun Club:** Hunter's Safety Course, July 13 @ 8am-2pm. Class fills up quickly, start watching for details at [www.pgc.pa.gov](http://www.pgc.pa.gov).



**Piney Meadows Campground:** Mother's Day Out, Saturday, May 18 @1-3pm, join for ladies night at the pavilion closest to rt.66. We will be having Scented Roots coming for a candle making class. We have 20 spots available. Must make payment to reserve your spot, \$40/person. Bring whatever you wish to drink and snack on <https://square.link/u/xLQCdyAG?src=sheet>

**Piney Meadows Campground:** Family Bingo, Saturday, May 25 @2-4pm, join for a fun afternoon of BINGO with the family at the pavilion closest to rt.66. 20 games will be played with a variety of prizes, 50/50 and lottery tree. Limited spots available. \$25/adults and \$5/kids. Message or call Tonya Aaron to reserve your spot 814-715-3681.

# **SPONSORSHIP SPOTLIGHT**

## **Extreme Metal Products**

4830 Briar Road  
Cleveland, OH 44135  
216-267-3900  
extrememetalproducts.com

Organized in 2005, to combine decades of previous success and experience in custom industrial sheet metal fabricating with the love for powersports, to design and manufacture aftermarket accessories for UTV's, ATV's and Jeeps.

By remaining "fleet afloat" and maintaining constant contact with OEM market specialists, we are able to respond with agility to market trends, new model revisions, customer feedback and technical innovations.

Located in the manufacturing heartland (Cleveland, OH) and a one-tank trip from Americas best proving grounds, EMP builds their products right here so customers can feel good about using quality products Made in the USA.

Constant attention to detail, continuous innovation and extensive R&D and manufacturing facilities enable us to provide our customers with the finest "fit and finish" products at the best prices available.

Hours of operation:    M-Thu    8am-4:30pm  
                                      Fri        8am-4pm

# TRAIL NEWS!!



## TRAIL MAINTENANCE

Bob Guthrie  
bobbyg43@yahoo.com  
814-229-9589

Piney Rail Riders  
PO Box 265  
Strattanville, PA 16258  
info@pineyrailriders.org  
pineyrailriders.org



**USE CAUTION!!**  
**After the last bridge**  
**Before Lawrence Road**

## RADIO COMMUNICATION

Keep in touch with other riders in case of breakdowns or emergencies. Below are the most common channels that riders in the area use.

**Radio Channel 2 or FRS2**

**Frequency 462.5875**

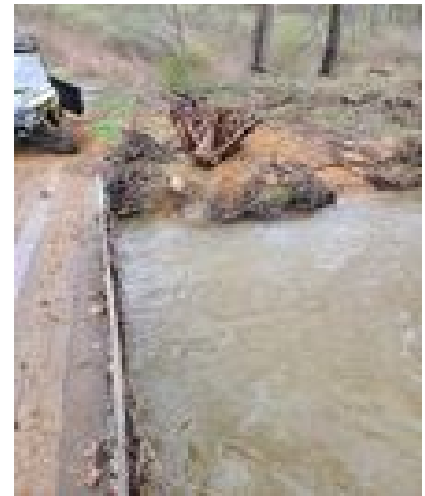
## TRAIL ETIQUETTE

Please remember that Piney Rail Riders has access to the railbed only and any side trails that are not leased or maintained by the club must have permission from the land owner to access. As respectful riders, please keep your speed and noise to a minimum when passing camps or houses, and if you see suspicious activity or items that should not be on the trail, take a picture and contact Bob Guthrie or any officer.

# TRAIL NEWS!!

## MAINTENANCE DAYS

Thank you to all our volunteers that are helping get the trail ready for the riding season. Our storage container has been leveled a little better and the dead end sign replaced directly behind it. There is no exit on the trail behind the storage container. A large log that was stuck under the bridge at One Eye's Valley has been removed. Downed trees and debris have been removed from the trail and wet areas/washed spots have been fixed.



Our next maintenance day will be held on Saturday, May 11 @ 9am at the Limestone Trailhead. Discussion took place at the April meeting regarding One Eyes Valley Bridge, the bridge on Bish Road and the wash out between bridge 7 and Lawrence Road. There is concern that flooding at One Eyes Valley Bridge may cause it to sink or shift. With riding activity over Bish Road Bridge, it becomes more unstable and with the recent rain, the wash out is getting worse and needs addressed. Please follow our Facebook page for more details and weather updates.



